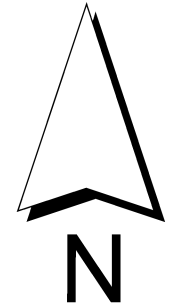
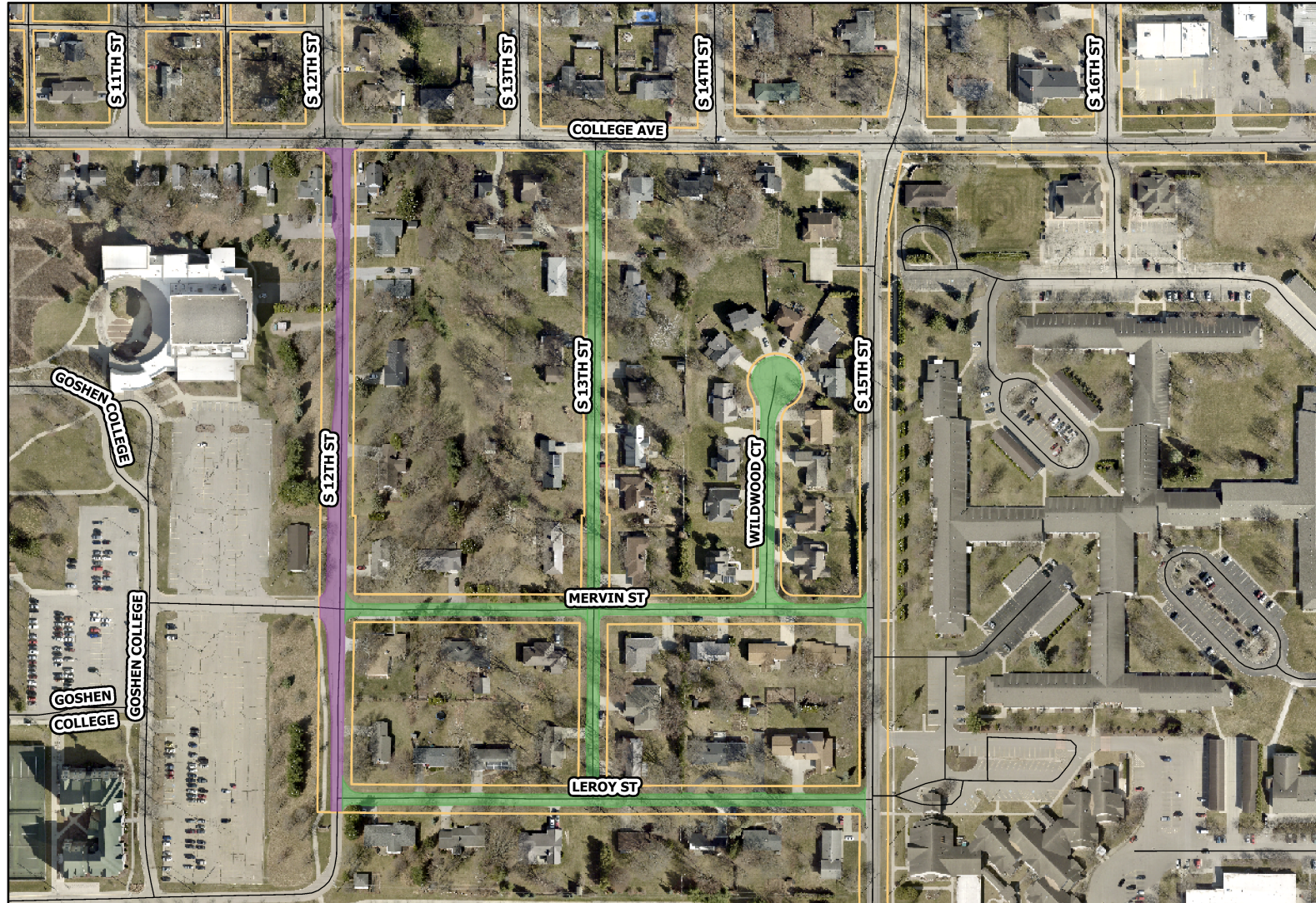


# 2023 City of Goshen Paving Package

12th St., 13th St., Leroy St., Mervin St. and Wildwood Ct.



0 100 200 300  
Feet

## Legend

- Full-Depth Reclamation
- Full-Depth Replacement
- Mill and Pave
- Mill and Pave w/ Full-Depth Patching
- Overlay
- Overlay w/ Full-Depth Patching

Street	From	To	Area	Activity
12th St.	Leroy St.	College Ave.	3,534 sqYd	Mill and Pave w/ Full-Depth Patching
Leroy St.	12th St.	15th St.	2,147 sqYd	Mill and Pave
13th St.	Leroy St.	College Ave.	2,679 sqYd	Mill and Pave
Mervin St	12th St.	13th St.	1,064 sqYd	Mill and Pave
Mervin St.	13th St.	15th St.	1,117 sqYd	Mill and Pave
Wildwood Ct.	Mervin St.	Cul-De-Sac	1,697 sqYd	Mill and Pave

**Mill and Pave**  
2" Mill Depth  
2" HMA Surface

