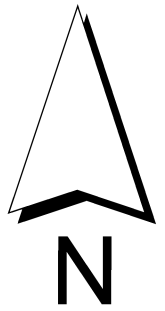
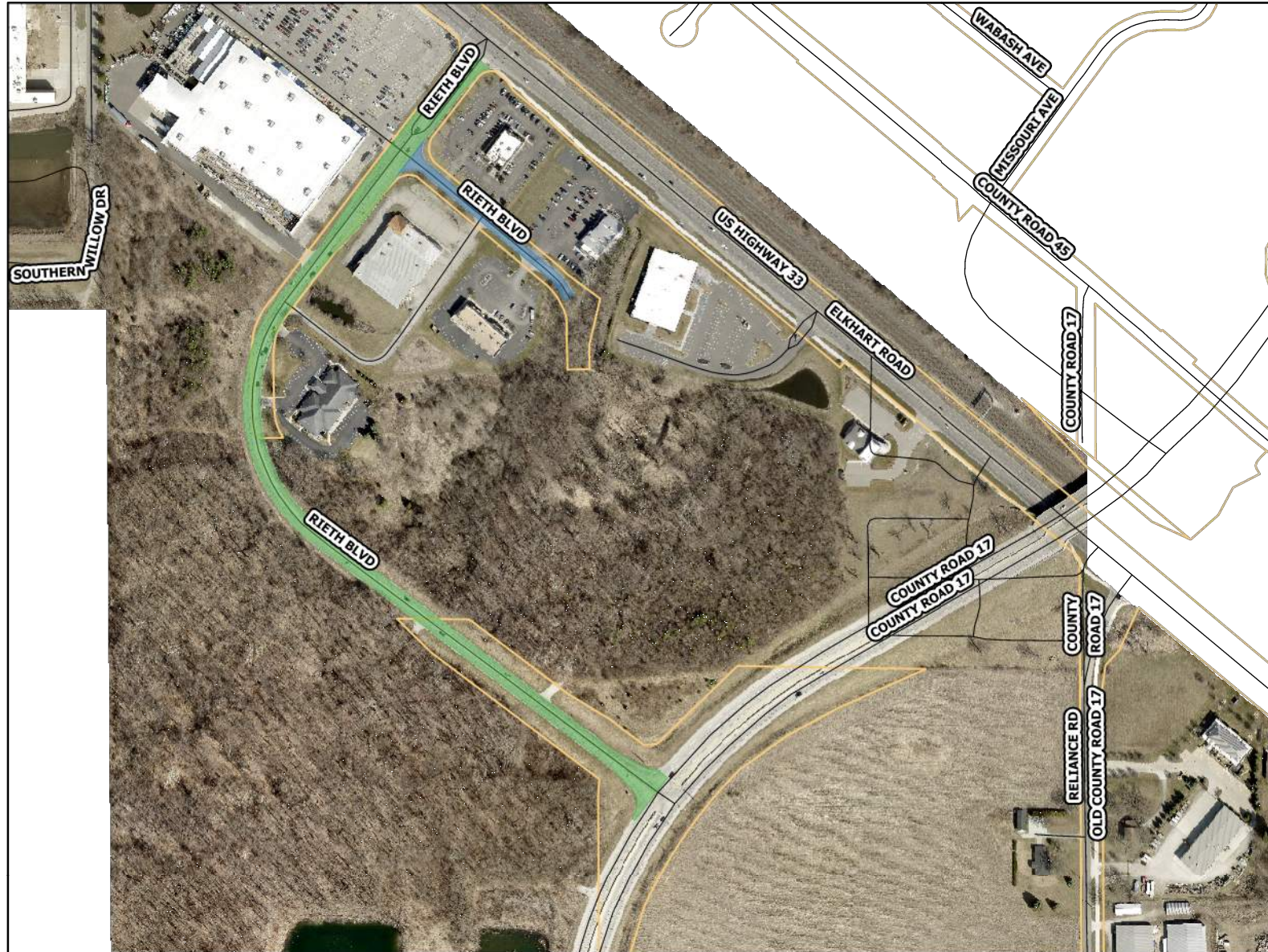


2023 City of Goshen Paving Package

Rieth Blvd. from CR 17 to US 33



0 200 400
Feet

Legend

- Full-Depth Reclamation
- Full-Depth Replacement
- Mill and Pave
- Mill and Pave w/ Full-Depth Patching
- Overlay
- Overlay w/ Full-Depth Patching

Street	Area	Activity
Rieth Blvd.	1,763 sqYd	Full-Depth Replacement
Rieth Blvd.	14,086 sqYd	Mill and Pave

Full Depth Section
 1 1/2" HMA Surface
 2" HMA Binder
 4" HMA Base
 6" No. 53 Recycled Concrete

Mill and Pave
 2" Mill Depth
 2" HMA Surface

