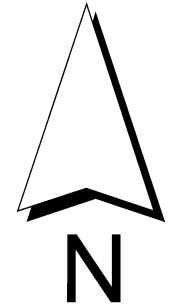
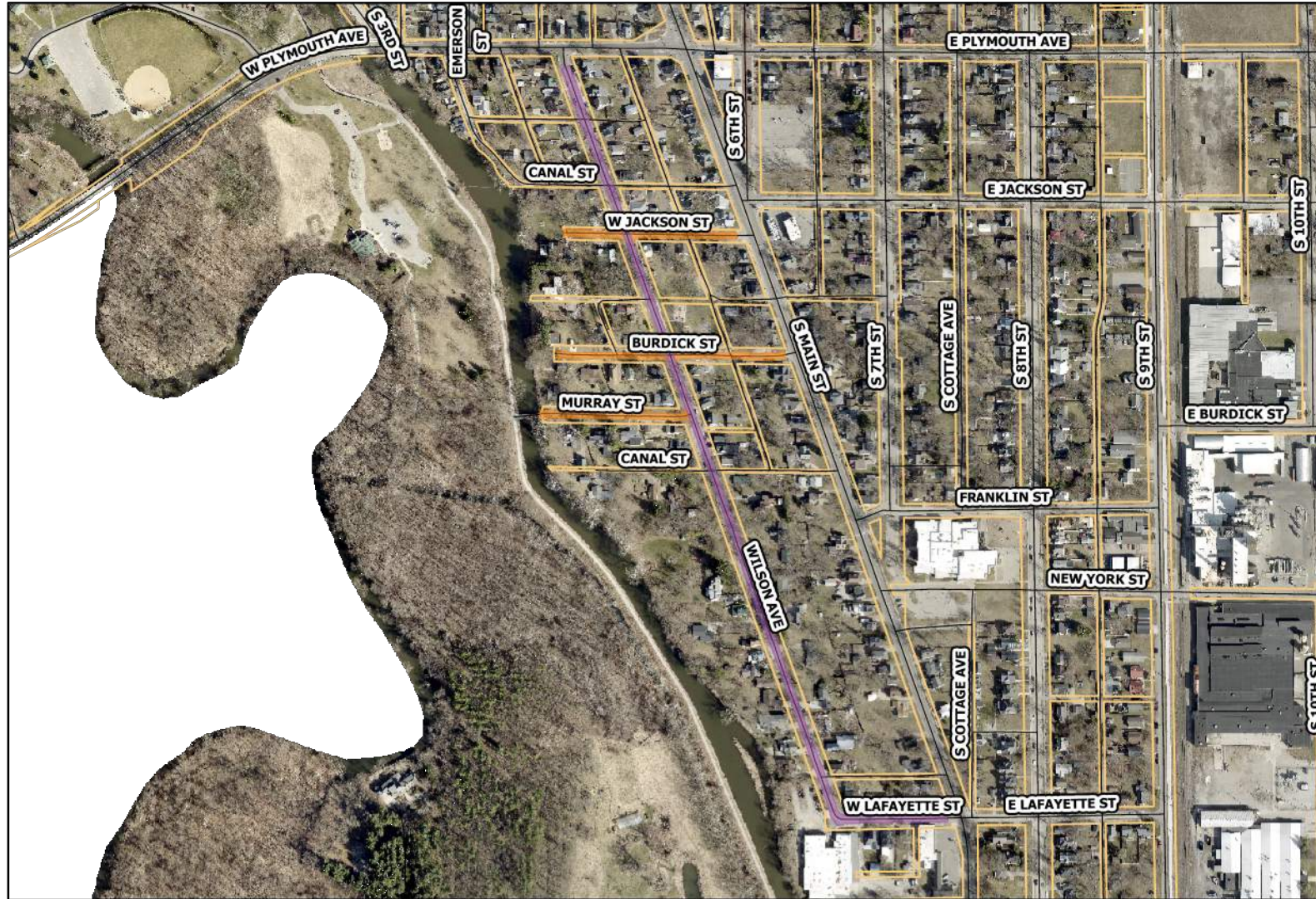


2023 City of Goshen Paving Package

Wilson Ave., Jackson St., Burdick St. and Murray St.



Legend

- Full-Depth Reclamation
- Full-Depth Replacement
- Mill and Pave
- Mill and Pave w/ Full-Depth Patching
- Overlay
- Overlay w/ Full-Depth Patching

Street	From	To	Area	Activity
Burdick St.	Canal	Wilson St.	735 sqYd	Overlay
Burdick St.	Wilson Ave.	Main St.	786 sqYd	Overlay
Jackson St.	Canal	Wilson St.	455 sqYd	Overlay
Jackson St.	Wilson Ave.	Main St.	759 sqYd	Overlay
Murray St.	Canal	Wilson Ave.	1,026 sqYd	Overlay
Wilson Ave.	Plymouth Ave.	Main St.	6,938 sqYd	Mill and Pave w/ Full-Depth Patching

Mill and Pave

1 1/2" Mill Depth
1 1/2" HMA Surface

Overlay

1.5" HMA Surface

Note: Remove ex. speed humps

