



# WILDEN AVENUE RECONSTRUCTION

## **Construction Update**

Reconstruction of Wilden Avenue will continue this month, starting at Rock Run Creek and continuing to SR 15 (Main Street). Work will include full removal and replacement of existing pavement, sidewalk, and underground utilities. Along with replacing aging infrastructure, the project will improve pedestrian safety and mobility along Wilden Avenue, ease traffic flow and access at the intersection of Wilden Avenue and SR 15, and provide improved storm water drainage.

## **Where and When**

2023 construction will occur in two phases. Phase 1 will begin March 20<sup>th</sup> at Rock Run Creek and extend to just east of 1<sup>st</sup> Street. Phase 2 is expected to begin in June and will extend from 1<sup>st</sup> Street to SR 15 (Main Street). Phase 1 construction will be completed before Phase 2 begins.

## **View Plans**

A full set of construction plans are available at the City of Goshen Engineering Department for viewing between 8:00am and 4:00pm Monday through Friday.

## **What You Can Expect**

During construction, the road and sidewalk will be closed to traffic within the limits of each phase of construction. However, the contractor will maintain access to homes within the closure. Traffic along SR 15 will be maintained, but access to and from Wilden will be closed at some points during the process.

## *School Bus Routes*

The City has been in contact with Goshen Community Schools (GCS), and the GCS Transportation Department will notify those families within the road closure areas, directing them to alternate student pick-up/drop-off locations.

## *Trash Collection*

Starting the week of March 20<sup>th</sup>, for all houses on Wilden Avenue between Rock Run Creek and SR 15 (Main Street), please place trash and recycling containers in these locations:

Addresses north of Wilden Ave (odd numbers): Place trash/recycling cans in the alley

Addresses south of Wilden Ave (even numbers): Place trash/recycling cans at the nearest cross street, south of Wilden (on either Michigan Ave, 1<sup>st</sup> Street, 2<sup>nd</sup> Street, or 3<sup>rd</sup> Street)

*(See Reverse for Mail Delivery)*

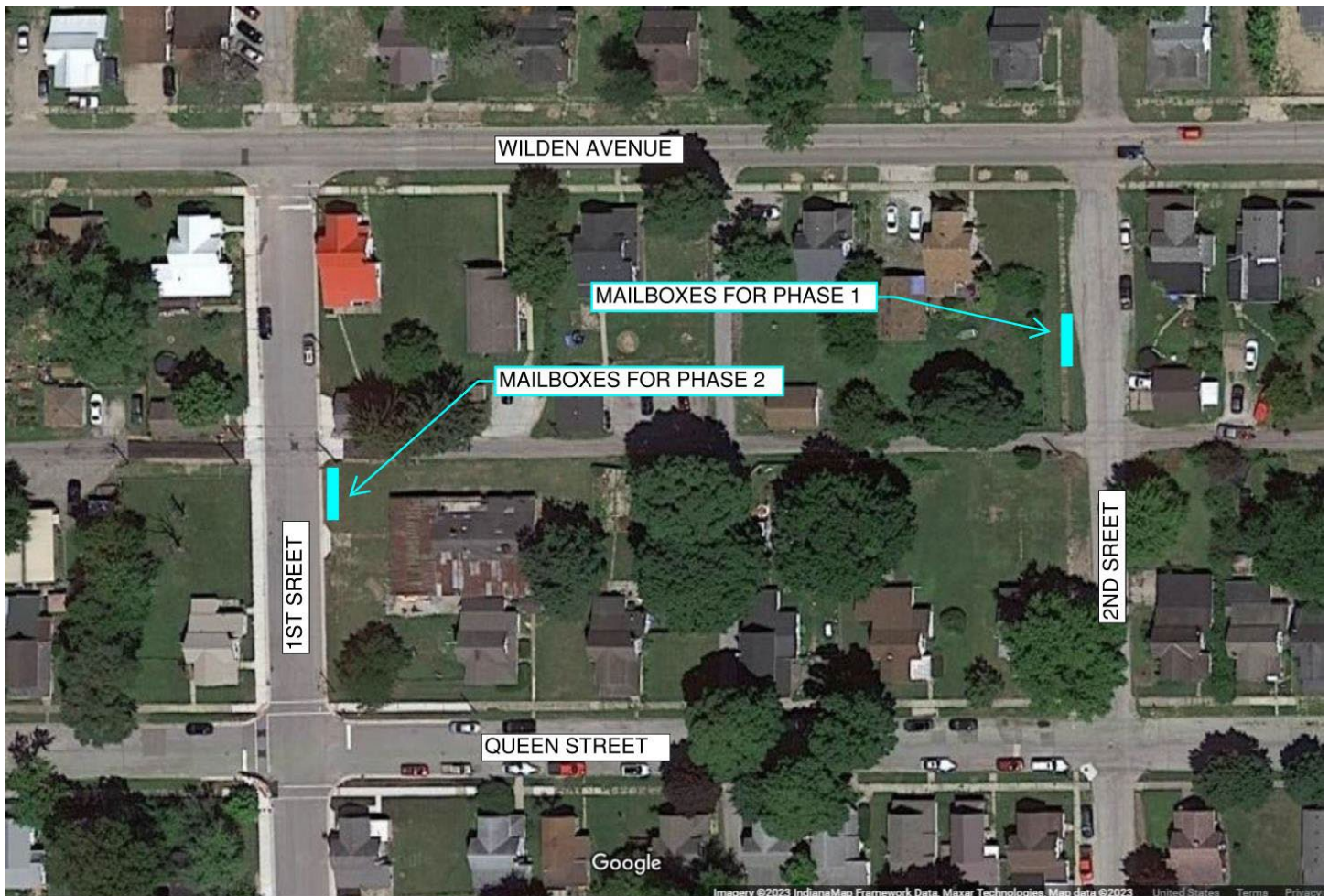
***Información en Español***



## *Mail Delivery*

Phase 1: Starting March 27, for all houses between Rock Run Creek and 1<sup>st</sup> Street, mail will be delivered to a mailbox bank located on 2<sup>nd</sup> Street (see map of location, below). The City will notify the residents when mail will be switched back to normal delivery.

Phase 2: Starting sometime in June, for all houses between 1<sup>st</sup> Street and SR 15 (Main Street), mail will be delivered to a mailbox bank located on 1<sup>st</sup> Street (see map of location, below). The City will notify residents before mail delivery changes, and when mail will be switched back to normal delivery.





# WILDEN AVENUE RECONSTRUCTION

## Sidewalk Slopes Exceeding ADA Regulations

Due to the need to match existing elevations and design constraints, the proposed sidewalks along Wilden near 3<sup>rd</sup> Street will have maximum running slopes of around 7.2% (north of Wilden) and around 6.3% (south of Wilden). These exceed the maximum of 5% allowed by ADA. However, existing sidewalks in these same areas have an average of 5.4% (north of Wilden) and 5.3% (south of Wilden), with maximum slopes as high as 5%-7% (north of Wilden) and 5%-16% (south of Wilden). If anyone has concerns regarding the variance from ADA regulations, please contact Goshen Engineering.

## Project Updates

Project updates and additional information will be made via the following options:

- City of Goshen's Facebook page
- City of Goshen's Website, under the Engineering Department
- Mailings or door hangers directly to residents

## Contact Information

- Engineering Department
  - Ph. (574) 534-2201
  - Email: [engineering@goshencity.com](mailto:engineering@goshencity.com)
- John Wakeman, DLZ
  - Contract Construction Observer for the City of Goshen
  - Ph. (260) 564-0958
  - Email: [jwakeman@dlz.com](mailto:jwakeman@dlz.com)