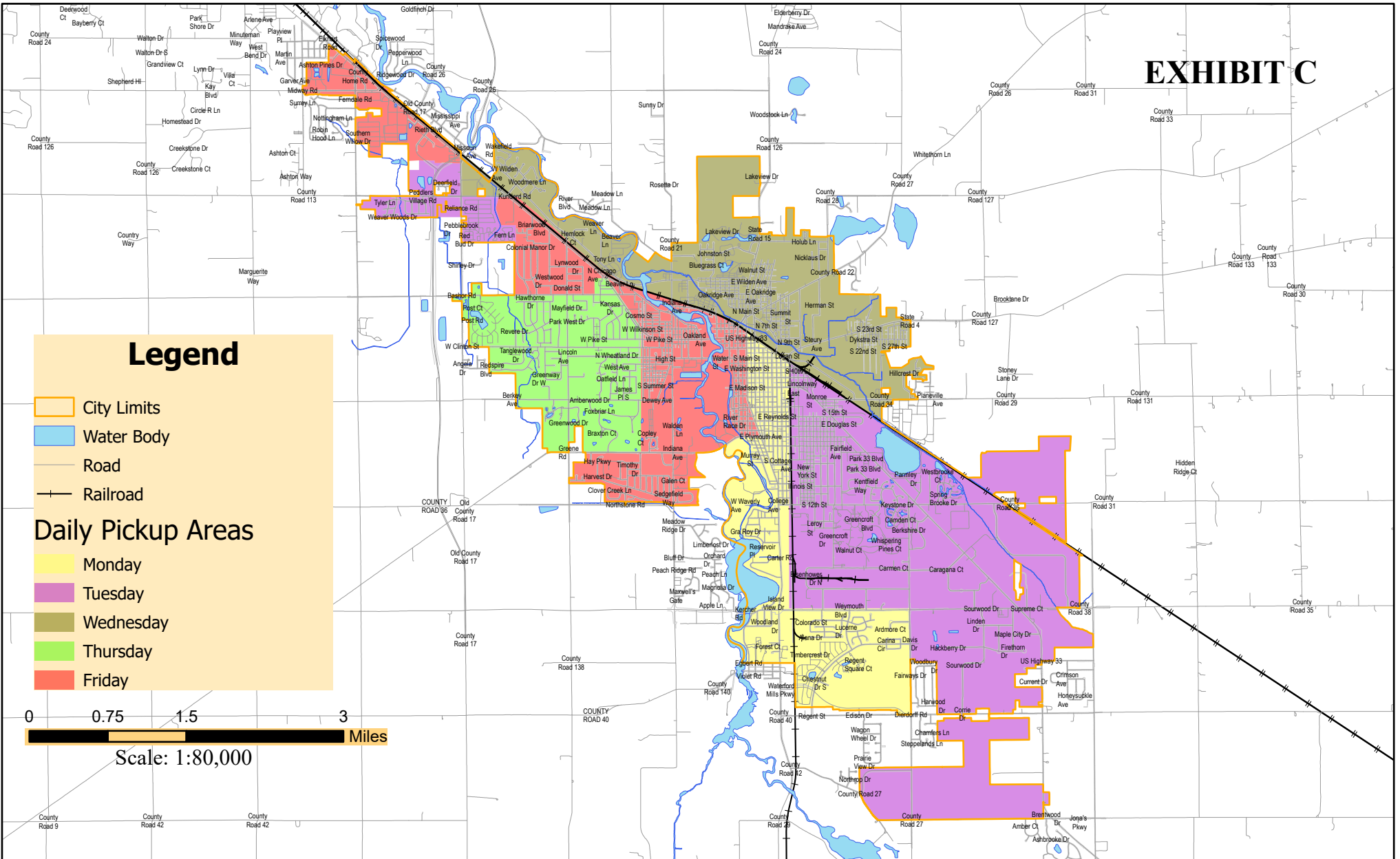


EXHIBIT C

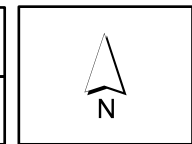


The City of Goshen's Digital Data is the property of the City of Goshen and Elkhart County, Indiana. All graphic data supplied by the city and county has been derived from public records that are constantly undergoing change and is not warranted for content or accuracy. The city and county do not guarantee the positional or thematic accuracy of the data. The cartographic digital files are not a legal representation of any of the features depicted, and the city and county disclaim any assumption of the legal status they represent. Any implied warranties, including warranties of merchantability or fitness for a particular purpose, shall be expressly excluded. The data represents an actual reproduction of data contained in the city's or county's computer files. This data may be incomplete or inaccurate, and is subject to modifications and changes. City of Goshen and Elkhart County cannot be held liable for errors or omissions in the data. The recipient's use and reliance upon such data is at the recipient's risk. By using this data, the recipient agrees to protect, hold harmless and indemnify the City of Goshen and Elkhart County and its employees and officers. This indemnity covers reasonable attorney fees and all court costs associated with the defense of the city and county arising out of this disclaimer.

February
2022

Trash Pickup Areas

MUNICIPAL TRASH SERVICE ROUTES BY DAY



Department of Public Works & Safety Office of Engineering

204 East Jefferson Street, Goshen, Indiana 46528
Phone: 574-534-2201 Fax: 574-533-8626